




22465# · Edgware Road


W2 · Marylebone · Available now


£2,817pcm (£650pw)


£650 holding deposit · £3,250 security deposit

 Furnished

 484 sq ft


 1 bed

 1 bath


 4th floor


 Ample Storage


 Big Windows


 Concierge

 Dishwasher

 Elevator

 Freezer

 High Ceilings

 Washer

3D tour

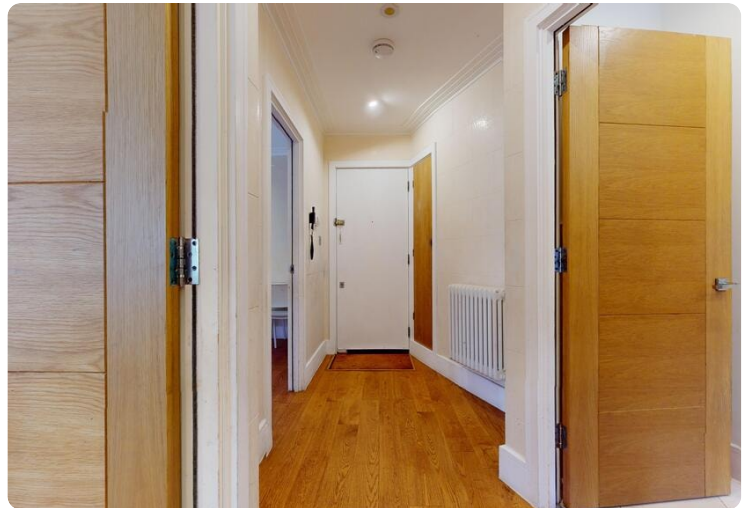
Photos

Map

Glades Properties
joy@gladesproperties.co.uk · +447951603447

Edgware Road

Photos



Glades Properties

joy@gladesproperties.co.uk · +447951603447

Edgware Road

Map

